

# VP SERIES

## Vacuum Pump



## Technical Specifications

The VP Series Vacuum Pumps provide a complete conveying system with controls, filter and blower all in one for a compact and versatile unit.

With more than 5 different filter types, the VP Series can convey pellets, regrind and dusty materials over short to medium distances and is available in open or closed-loop operation.

With a compact assembly as a stand-alone unit, the VP Series sets itself apart from the competition. It can be placed anywhere on the shop floor and has many configuration options to suit your needs.

## Features

### Standard Features

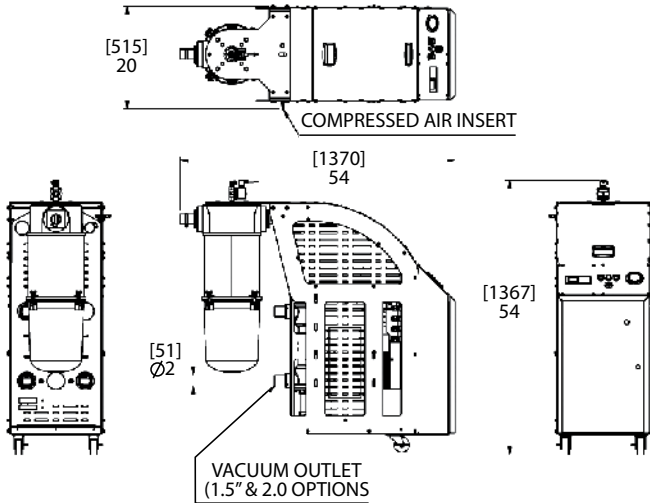
- Ultra-compact design
- Filter types to convey:
  - Pellets
  - Pellets & regrind
  - Pellets, dusty regrind and free-flowing powder (consult factory)
- Compressed air filter cleaning for most filter types
- 1.0 to 11.5 hp (0.75 to 8.5 kW) models available
- Available in Single, 4-station or 9-station controls
- Conveys continuously using an atmospheric relief valve to provide high conveying rates over long distances
- Suitable for most virgin, powder and regrind applications
- 50/60 Hz, 3-Phase with 24 VDC control voltage
- NEMA -12 junction box with electrical disconnect
- Portable caster design
- Quick connect Distribution Block for adaptability

### Optional Features

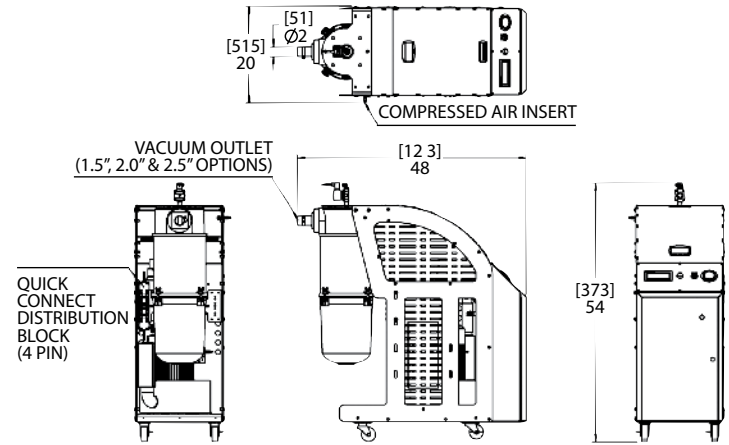
- Open or closed-loop design
- Remote proportioning valve
- Purge conveying capability
- Special voltages
- Prefilters for dusty materials
- Teflon element filters

## Product Diagrams

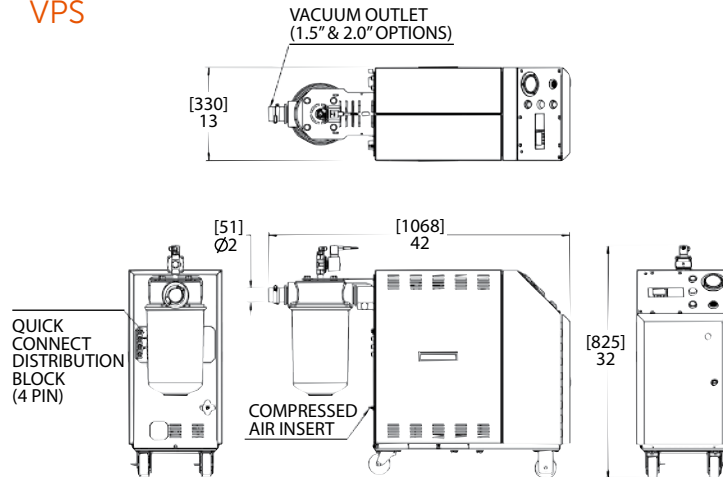
### VPR



### VPL

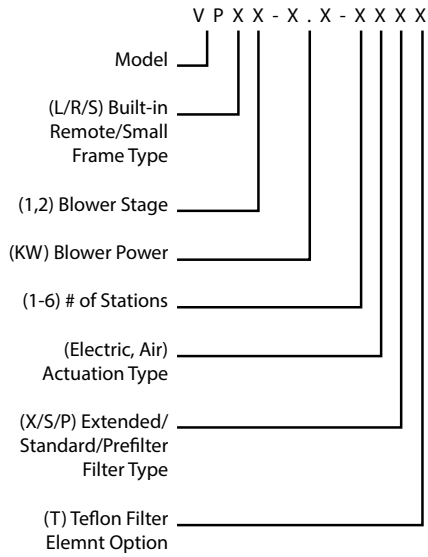


### VPS

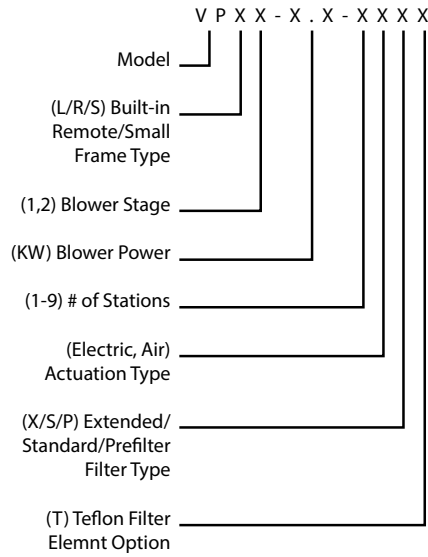


## Specifications

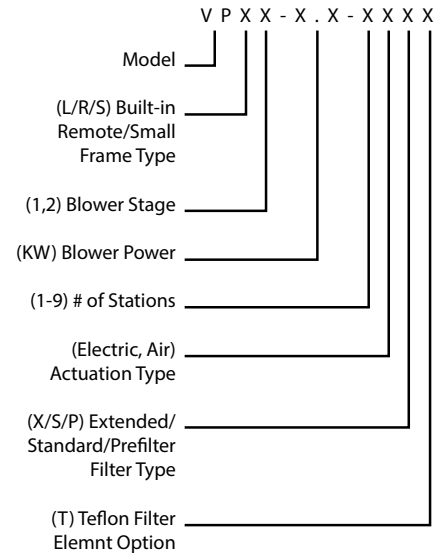
HP (kW) 60hz	HP (kW) 50hz	Conveying Distance @100 eq.ft, 60hz		Conveying Distance @100 eq.ft, 50hz		Vacuum Inlet in. (mm.) @60hz/50hz	Material Inlet in. (mm) @60hz	Material Inlet in. (mm) @60hz	Voltage
		Stage	lbs./hr. (kgs./hr.)	Stage	lbs./hr. (kgs./hr.)				
1.0 (0.85)	1.0 (0.75)	1	400 (180)	1	280 (130)	1.5 (38)	1.5 (38)	1.5 (38)	24 VDC
2.0 (1.5)	1.7 (1.3)	1	650 (295)	1	455 (205)	1.5 (38)	1.5 (38)	1.5 (38)	
3.5 (2.6)	3.0 (2.2)	1	900 (405)	1	630 (285)	2.0 (50)	2.0 (50)	1.5 (38)	
3.5 (2.6)	3.0 (2.2)	2	1500 (680)	2	1050 (475)	2.0 (50)	1.5 (38)	1.5 (38)	
5.0 (3.7)	4.4 (3.4)	2	2400 (1090)	2	1680 (760)	2.0 (50)	2.0 (50)	1.5 (38)	
6.0 (4.6)	5.3 (4.0)	2	4000 (1815)	2	2800 (1270)	2.5 (64)	2.5 (64)	2.0 (50)	
8.5 (6.3)	7.4 (5.5)	2	4700 (2130)	2	3290 (1490)	2.5 (64)	2.5 (64)	2.0 (50)	
11.5 (8.5)	10 (7.5)	2	6600 (2995)	2	4620 (2095)	2.5 (64)	2.5 (64)	2.0 (50)	

**MODEL NAMING MATRIX**

**EXAMPLE: VPL2-2.2-4AXT**

VPL 2 stage, 2.2KW, 4 -station built-in valves, air operated with extended filter type, teflon element


**EXAMPLE: VPR2-2.2-4XT**

VPR 2 stage, 2.2KW, 4 -station remote air, operated sequencing valves, extended filter with teflon element


**EXAMPLE: VPS1-1.5-4ST**

VPs 1 stage, 1.5KW, 4 -station air operated remote valves, standard filter with teflon element