

# GH-F SERIES

## Gravimetric Feeders



## Technical Specifications

GH-F Series Gravimetric Feeder adds colorant or other free-flowing material to your process, based on a self-calibrating controller that makes recalibration unnecessary and eliminates the overfeeding that typically accompanies volumetric feeders.

### Features

#### Standard Features

- Precision 0.02% span accurate weighing system
- Serial printer port
- Aluminum and mild steel contact surfaces
- DF-1 communications port
- Field-mounted proximity switch for extruder speed pick-up
- Surge hopper with reload valve
- Square mounting flange for machine-mount
- Touch-screen remote control system
- 3" (76mm) OD discharge opening
- Extruder following circuit
- Hopper lid arranged for AEC receivers and loaders
- 115/1/60 supply voltage

#### Optional Features

- Customer-specified mounting flange
- Special voltage (transformer)
- Supply hopper lids cut for other vacuum receivers or loaders; cut-out pattern only <sup>1</sup>
- Ethernet communications port
- 1 Allow additional delivery lead times

#### Application Notes

- GH-F Series Additive Feeders are continuous loss-in-weight systems designed to work with continuous operation extrusion lines only
- Any use other than with factory-approved extrusion applications is not recommended and may void any warranty or return and refund claims, implied and otherwise stated

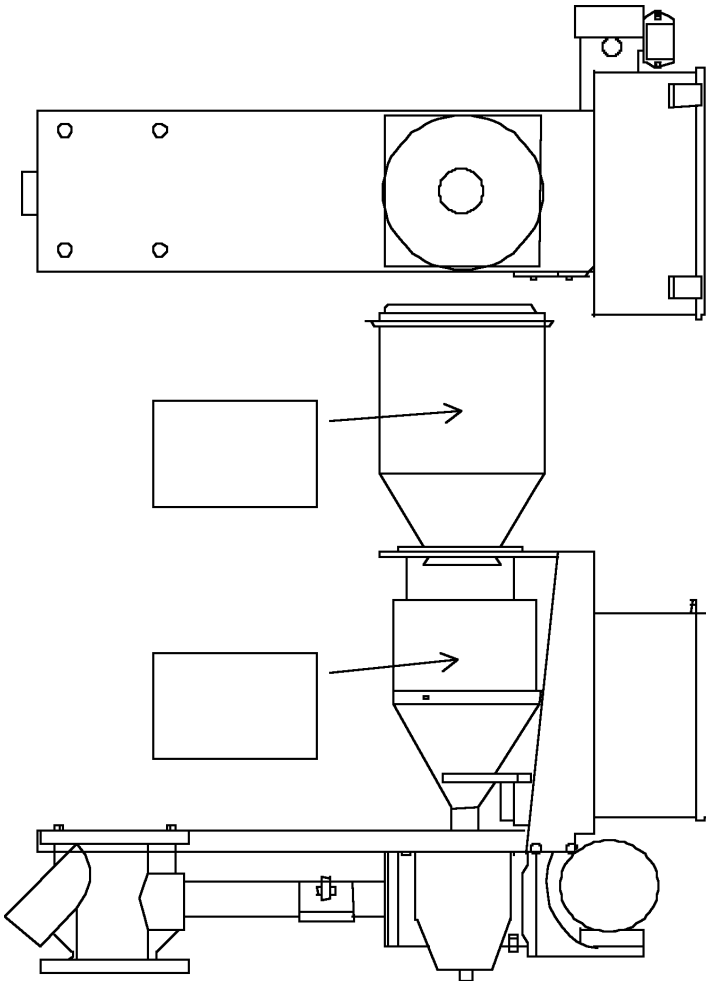
## Specifications

Model	Max. Feed Rate lbs./hr (kg/hr) <sup>1</sup>	Hopper capacity, lbs. (kg)	Auger size in. (mm) <sup>2</sup>	Shipping Weight lbs. (kg) <sup>3</sup>	Crate Dimensions in. (cm) <sup>3</sup>
GH-F 003	0.5-30 (0.22-13.6)	10 (4.5)	0.75 (19.1)	200 (91)	48 x 48 x 48 (122 x 122 x 122)
GH-F 009	5-90 (2.3-40.9)	10 (4.5)	1 (25.4)	200 (91)	48 x 48 x 48 (122 x 122 x 122)
GH-F 025	25-250 (11.4-113.5)	25 (11.4)	1-5/8 (41.3)	200 (91)	48 x 48 x 48 (122 x 122 x 122)
GH-F 040	40-400 (18.2-181.6)	25 (11.4)	2 (50.8)	200 (91)	48 x 48 x 48 (122 x 122 x 122)
GH-F 100	100-1000 (45.4-454)	50 (22.7)	3 (76.2)	200 (91)	48 x 48 x 48 (122 x 122 x 122)
GH-F 200	200-2000 (90.8-908)	50 (22.7)	4 (101.6)	200 (91)	48 x 48 x 48 (122 x 122 x 122)

1. Rate is based on fifty (50) lbs./cu. ft. (800 kg/cu. m.) free-flowing pelletized additive. Actual rates may vary.

2. GH-F Series models are available with various auger sizes that will affect throughput rate. Consult factory for guaranteed rates based upon individual applications. Material tests may be required.

3. Weights and dimensions listed are approximate; may vary based on exact feeder configuration, options, accessories, etc.



Compounding	Max Output lbs. (kgs.)	Number of Components
AMC 500	500 (225)	2 to 8
AMC 1000	1,000 (450)	2 to 8
AMC 1500	2,500 (1,140)	2 to 8
AMC 5000	5,000 (2,280)	2 to 8
AMC 10000	10,000 (4,545)	2 to 8
AMC 15000	20,000 (6,800)	2 to 8