

# ACCUMETER™ SERIES

## Loss-In-Weight Blender



## Technical Specifications

AccuMeter™ is one of the most versatile gravimetric blending systems with its ability to feed from 50 grams/hr to 16,500 lbs/hr and is able to accommodate up to eight precision feeders per extruder. All components are continuously dosed, and the material flow is constantly monitored and controlled. The system has a cumulative dosing accuracy of  $\pm 0.5\%$  and is driven by variable speed motors. This system will improve overall product quality and reduce material usage caused by over-feeding, resulting in reduced product costs.

The AccuMeter™ series features a modular, compact design that provides complete flexibility for changes in your process. Pellets, micro-pellets, powders and regrind are all accurately metered. Self-calibration eliminates the need to take manual weight samples or calibrations. Material changeovers are quick and easy - saving time, labor and money.

## Features

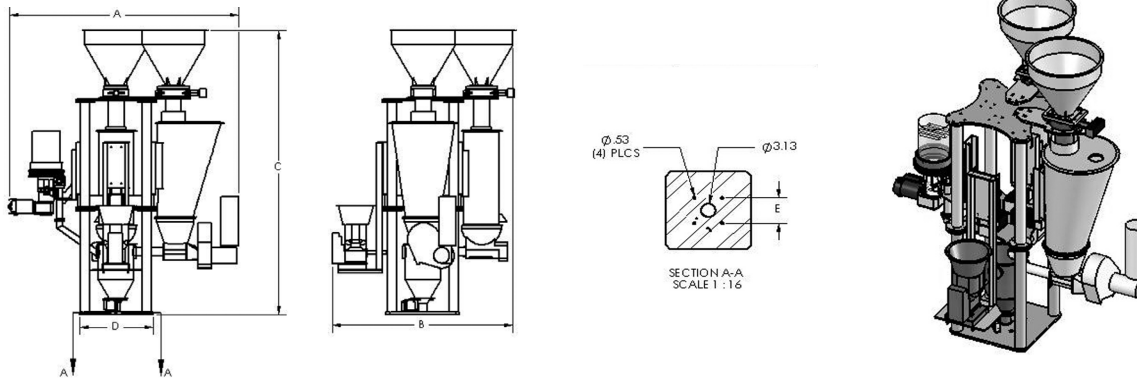
### Standard Features

- Automatically adjusts individual feeders to match the extruder rate at the exact ratio required
- Upper material refill hoppers with refill valves
- Individual component weigh hoppers
- Mass flow weigh hopper assembly
- User-friendly color touch screen programmable controller
- PWM-DC or inverter duty AC motor (depending on model) provide precision metering with wider recipe ranges
- Precision 0.02% analog or 0.0001% digital load cells (depending on model) provide accurate weight information
- Storage book for up to 50 recipes
- Feeder trending
- Full diagnostics
- Complete inventory and material usage information
- Alarm outputs
- 115/1/60, 230/1/60 or 460/3/60 supply voltage (varies by model), other voltages available

### Optional Features

- Twin-screw feeders and special agitators are available for non free-flowing material
- Mezzanine mounting stand with 4" tube stub
- Low-level, proximity sensor for each supply hopper
- Supply hopper lids cut for non-Sterling vacuum receivers
- Agitated regrind supply and weigh hoppers for regrind material (per component)

## Product Diagrams



Model	A in. (mm.)	B in. (mm.)	C in. (mm.)	D in. (mm.)	E in. (mm.)
4-component	56 (142)	46 (117)	72 (183)	18.5 (47)	6 sq. (15 sq.)
6-component	58 (147)	54 (137)	82 (208)	28 (71)	6 sq. (15 sq.)
8-component	70 (178)	66 (168)	88 (234)	28 (71)	6 sq. (15 sq.)

## Advanced Controller

CoExpert-AB co-extrusion A-B VersaView™ based industrial graphical control system with touch-screen. Includes an integrated Touch-Screen controller, significantly easing installation and operator usage. For use with up to eight (8) GH "flow control" units without a haul-off control. Controls extruder speeds, layer percentages, and blender recipes. Complete with all necessary hardware, software, and communications requirements. Communication wires and cables not included.

CoExpert-AB with line speed control (haul-off). Required when using a CoExpert-AB package to control the haul-off. For use with up to eight (8) OL blending systems or GH "flow control" units and a haul-off control. Encoder included for interfacing to the CoExpert-AB control system. Controls overall yield (weight/length), weight per area. Communication wires and cables not included.

## Specifications

General Blending	Max Output lbs. (kgs.)	Number of Components
AMP 500	500 (225)	2 to 8
AMP 1000	1,000 (450)	2 to 8
AMP 1500	2,500 (1,140)	2 to 8
AMP 5000	5,000 (2,280)	2 to 8
AMP 10000	10,000 (4,545)	2 to 8
AMP 15000	20,000 (6,800)	2 to 8

Fiber Applications	Max Output lbs. (kgs.)	Number of Components
AMF 500	500 (225)	2 to 8
AMF 1000	1,000 (450)	2 to 8
AMF 1500	2,500 (1,140)	2 to 8
AMF 5000	5,000 (2,280)	2 to 8
AMF 10000	10,000 (4,545)	2 to 8
AMF 15000	20,000 (6,800)	2 to 8

Compounding	Max Output lbs. (kgs.)	Number of Components
AMC 500	500 (225)	2 to 8
AMC 1000	1,000 (450)	2 to 8
AMC 1500	2,500 (1,140)	2 to 8
AMC 5000	5,000 (2,280)	2 to 8
AMC 10000	10,000 (4,545)	2 to 8
AMC 15000	20,000 (6,800)	2 to 8