

# STEAM TRAPS

## Float & Thermostatic (FT69-3-15)



### Float & Thermostatic Trap (FT69-3-15)

Heating Service: 3/4" NPT - Vacuum to 15 psi

\* Model FT69-3-15 available with stainless steel internals.

## Technical Specifications

Sterlco® Float and Thermostatic (F&T) steam traps are preferred for efficient, economical vacuum and pressure service. F&T traps are highly recommended for applications where large volumes of air are present on start-up and where condensing rates can vary widely. F&T traps are ideal for service in health care institutions, apartments, educational facilities, offices and other public areas as well as in business and industry.

The FT69-3-15 is available in 3/4" pipe size. Float and Thermostatic steam traps are designed for ease of installation and simplified, minimal maintenance.

## Features

### Standard Features

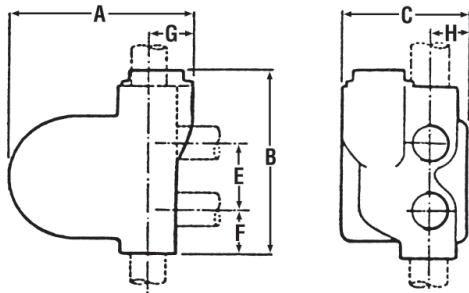
F&T traps operate in response to rising and falling condensate levels and rising and falling temperatures near the thermostatic vent, as follows:

- Condensate initially fills the trap body to a predetermined level, which is sufficient to seal the valve seat opening.
- As the condensate level continues to rise, the float will rise causing the valve to pull away from the seat.
- Condensate will then be discharged into the return line through the trap outlet. The rise and fall of condensate level causes a continuous discharge which is typical of F&T traps.
- Air entering the trap is discharged through the thermostatic vent. The opening and closing of the vent is dependent upon the temperature surrounding the thermostatic element.
- As the element cools with more air accumulating, it opens to allow the air to vent to the atmosphere.

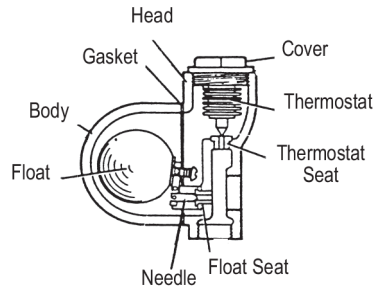
### Typical Installations

Install F&T traps in steam applications such as Instantaneous Heaters, Steam Humidifiers, Steam-Jacketed Vessels, Unit Heaters, Sterilizers and other similar equipment. Pictured on the next page are diagrams of typical installations.

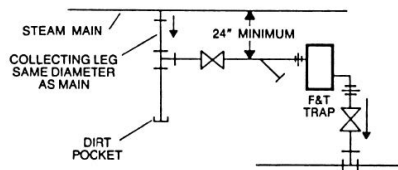
## Product Diagram



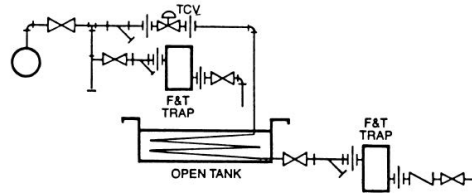
FT69-3-15



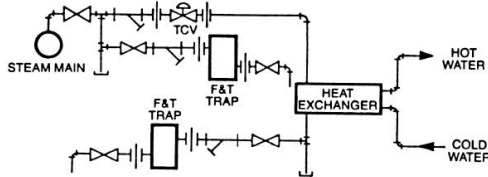
Model	Ship Wt. Lbs.	Inlet	Outlet	A	B	C	E	F	G	H
FT69-3-15	6	3/4	3/4	4 3/4	5 3/8	3 3/8	1 3/4	1 5/8	1 1/8	1 1/8



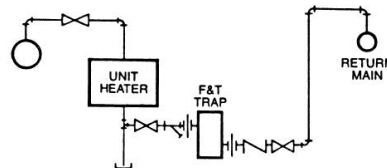
Draining Main



Draining Open Tank



Draining Heat Exchanger



Draining Unit Heater

## Capacities

### Discharge Capacities - SHEMA Ratings to 15 PSI

Model	Pipe Size	Pressure Differential, PSI						
		1/4 lb.	1/2 lb.	1 lb.	2 lb.	5 lb.	10 lb.	15 lb.
		Capacities in lbs. of Condensate per hour						
FT69-3-15	3/4"	70	100	140	200	210	220	230

Note: Capacity ratings shown here are based on the code established by the Steam Heating Equipment Manufacturers Association (SHEMA).

### Discharge Capacities - Actual Ratings to 15 PSI

Model	Pipe Size	Pressure Differential, PSI					
		1/2 lb.	1 lb.	2 lb.	5 lb.	10 lb.	15 lb.
		Capacities in lbs. of Condensate per hour					
FT69-3-15	3/4"	400	560	800	840	880	920

Note: Capacities listed are actual ratings. To provide for peak loads such as warming up periods, a frequently used safety factor is twice the hourly condensing rate.

Meeting the standards of

